



Complex operations  
require the right tool.

## GuideLiner<sup>®</sup> V3 and GuideLiner<sup>®</sup> Coast<sup>®</sup> Guide Extension Catheters

When it comes to the GuideLiner<sup>®</sup> Catheter, you have options.

*Choose the right GuideLiner<sup>®</sup> Catheter for your patient.*



# The Deliverability to Match Your Patient's Anatomy

In 2009, the GuideLiner® Catheter revolutionized an industry and continues to build on a history of innovation and performance—one that's been demonstrated with more than 1.5 million catheters in cath labs around the world.<sup>1</sup> Now, with the addition of the GuideLiner® Coast® Catheter, you have the freedom to select a specific catheter to meet the specific needs of your clinical case.

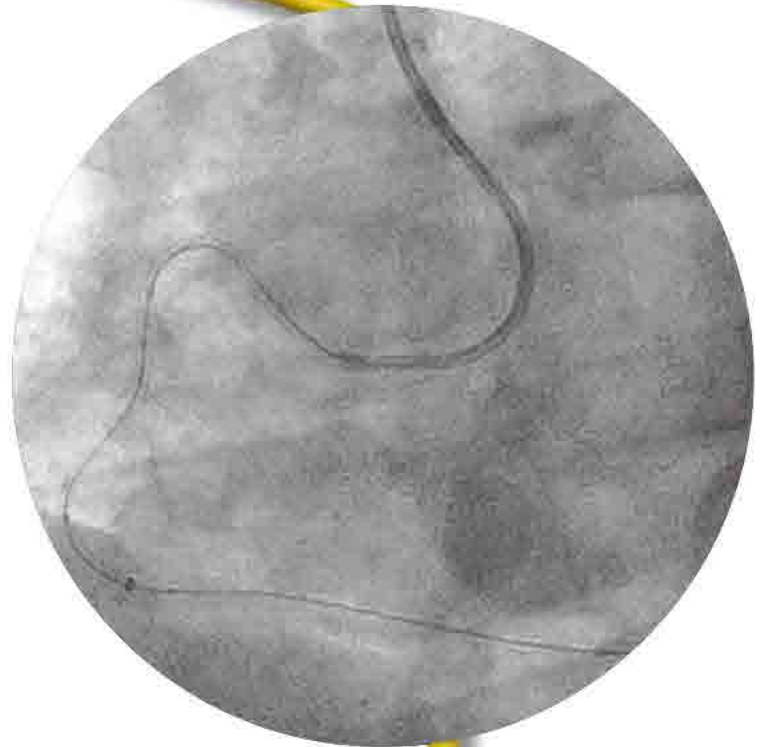
GuideLiner® is the only commercially available guide extension portfolio that offers both silicone and hydrophilic coated solutions to meet your unique clinical challenges with superior performance in backup support<sup>2</sup> and deliverability.<sup>3</sup>

"The GuideLiner® gives me the confidence to deliver my chosen balloon or stent to almost any location."<sup>4</sup>

— Michael S. Lee, MD, FACC, FSCAI

"The GuideLiner® has become an indispensable part of my tool kit for complex PCI. Simply put, it's a game changer."<sup>4</sup>

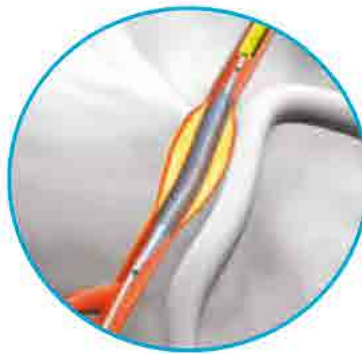
— Matthew Price, MD, FACC, FSCAI



## Multiple Clinical Uses



Coaxial alignment and backup support



Deep-seating for distal device delivery, including assistance in crossing chronic total occlusions (CTO)



Selective delivery of contrast

<sup>1</sup> Data on file with Teleflex.

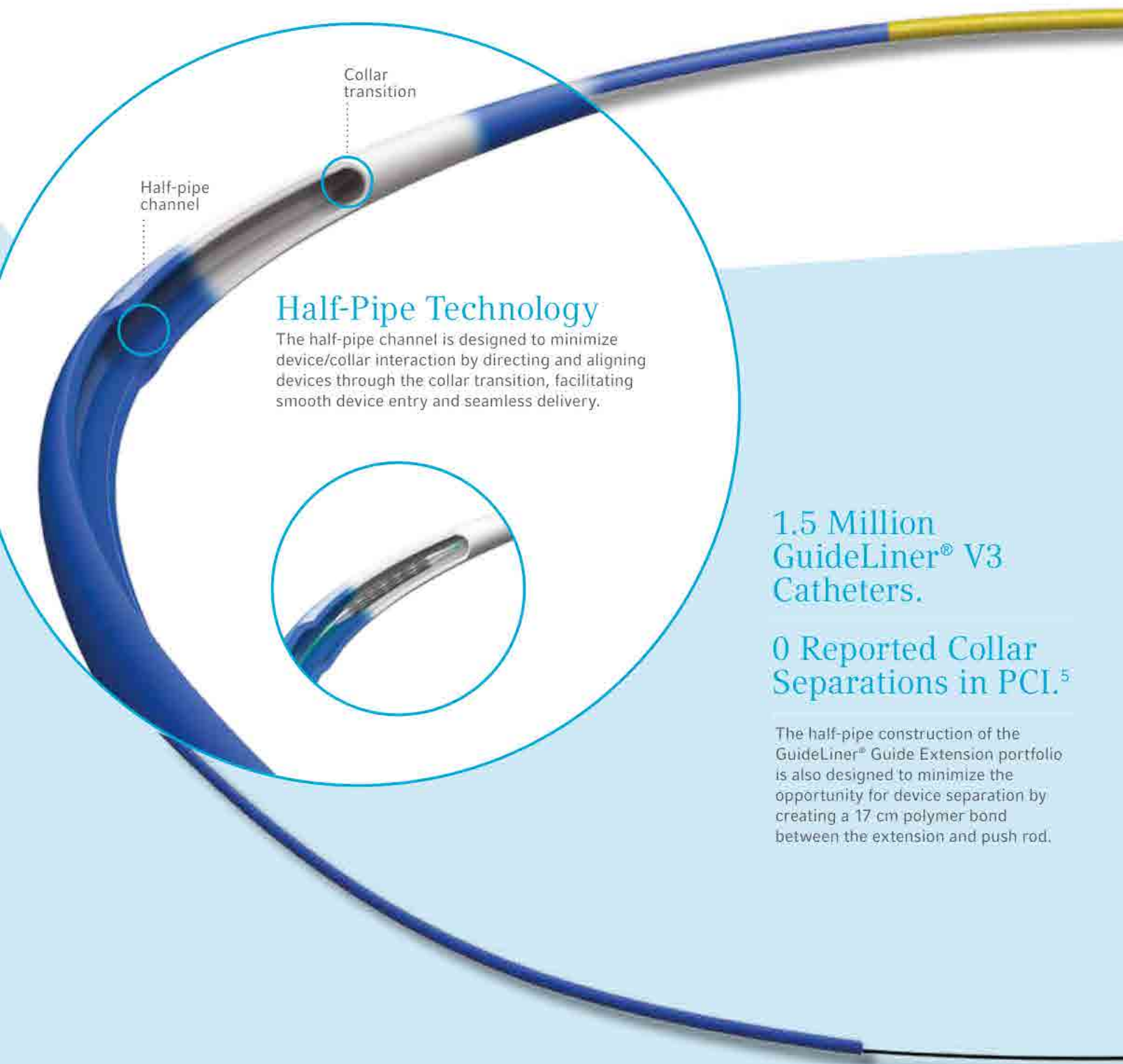
<sup>2</sup> All values based on bench test data averages (n≥5) of 6 Fr. models and are analyzed with a minimum of 95% confidence as a percentage of the means. All comparisons based on bench test results. Testing completed by Teleflex. Data on file at Teleflex. Bench test results may not necessarily be indicative of clinical performance.

<sup>3</sup> Required less force in a simulated model. Testing completed by Teleflex. Data on file at Teleflex. Bench test results may not necessarily be indicative of clinical performance.

<sup>4</sup> Dr. Lee and Dr. Price are paid consultants of Teleflex. These statements reflect the personal experiences and opinions of these physicians.

# Designed to Perform

It's not just the proprietary half-pipe technology that sets the GuideLiner® Guide Extension portfolio apart. The coil-reinforced extension is specifically designed to enable dependable deep-seating for the delivery of interventional devices to distal locations and to maintain luminal integrity.



Half-pipe channel

Collar transition

## Half-Pipe Technology

The half-pipe channel is designed to minimize device/collar interaction by directing and aligning devices through the collar transition, facilitating smooth device entry and seamless delivery.

1.5 Million  
GuideLiner® V3  
Catheters.

0 Reported Collar  
Separations in PCI.<sup>5</sup>

The half-pipe construction of the GuideLiner® Guide Extension portfolio is also designed to minimize the opportunity for device separation by creating a 17 cm polymer bond between the extension and push rod.

<sup>5</sup> Based upon a review of device experience reports for coronary usage of GuideLiner® V3 Catheters from launch until November 9, 2022. GuideLiner® V3 Catheters required less force in a simulated model. Data on file at Teleflex. Results may not be indicative of clinical performance.

# Tortuosity Tested

From challenging lesions to impossibly acute angles, percutaneous coronary interventions have grown more complex. GuideLiner® is a comprehensive guide extension portfolio designed to adapt to unique challenges in complex percutaneous coronary interventions, offering operators a total solution for addressing specific clinical needs encountered during the crossing of difficult lesions.

GuideLiner® V3 Catheter - siliconized

GuideLiner® Coast® Catheter - hydrophilic

## Highly Flexible, Coil-Reinforced Guide Extension

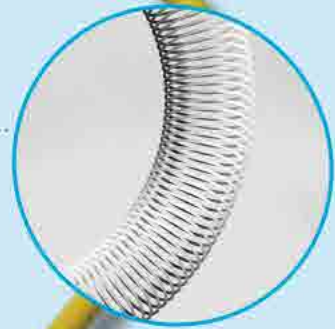
The GuideLiner® Catheter's coil-reinforced guide extension provides excellent flexibility and kink resistance allowing delivery through tortuous vessels to reach the target area.



Coil-reinforced guide extension is designed to maintain luminal integrity

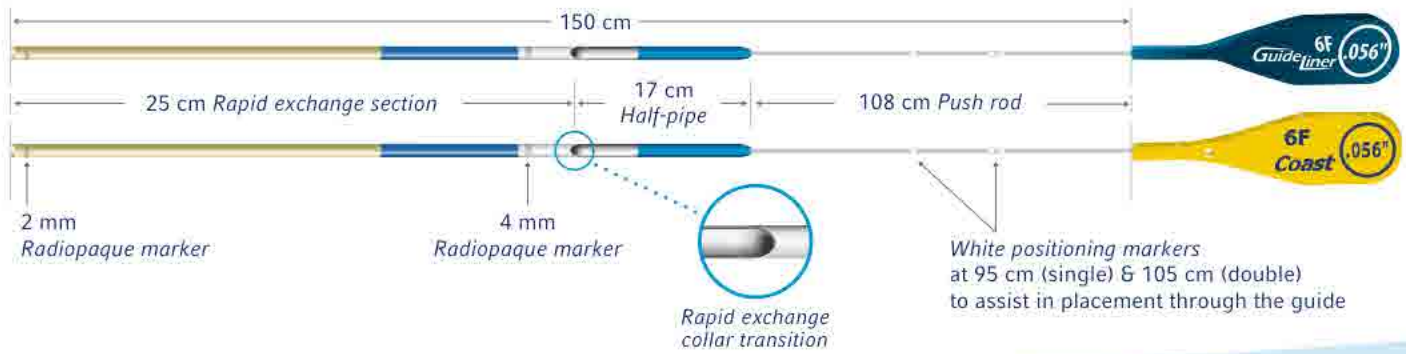


Kink resistant\*



\* Testing completed by Teleflex. Data on file with Teleflex. Bench testing results may not be indicative of clinical performance

# GuideLiner® Guide Extension Portfolio Dimensions



## It Comes Down to Size

While competitive devices incorporate a round pushrod, the GuideLiner® Guide Extension Catheters utilize a flat, ribbon-wire pushrod to provide a larger effective inner diameter (I.D.)\* to support the delivery of interventional devices. Although a round pushrod can offer greater pushability, its larger diameter can reduce the available space to deliver critical interventional devices.

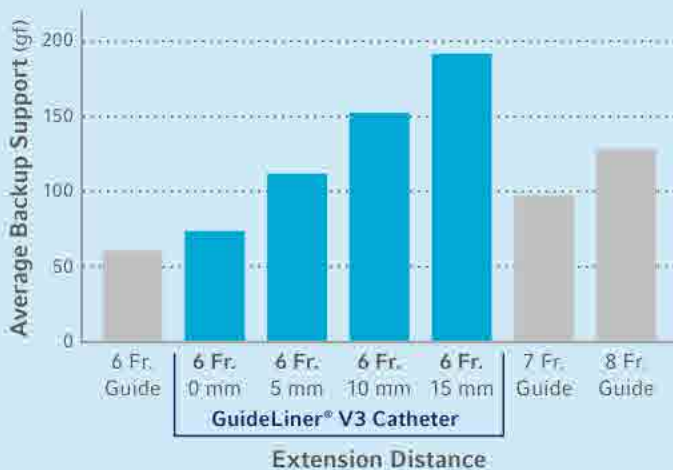


\*Effective I.D. = Guide Catheter I.D. (0.070") - Pushrod I.D.

7 Dimensions taken from manufacturer's labeling and internal testing by Teleflex. Data on file at Teleflex. Bench testing results may not be indicative of clinical performance.

## Maximum Backup Support

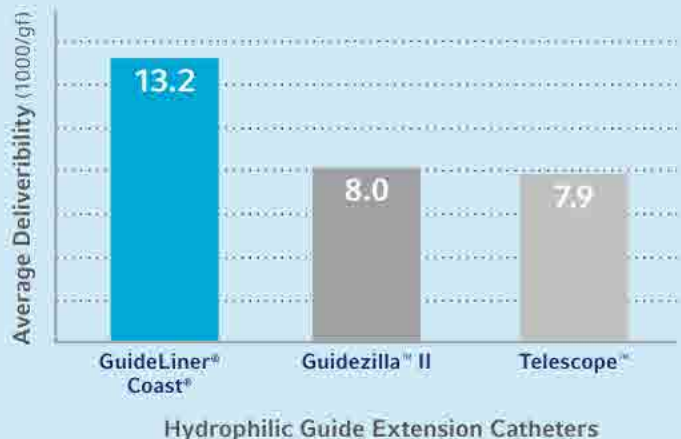
With as little as 5 mm of extension, bench testing has shown that the GuideLiner® V3 Catheter significantly increases the backup support of a 6 Fr. guide catheter.



Dimensions taken from manufacturer's labeling and internal testing by Teleflex. Data on file at Teleflex. Bench testing results may not be indicative of clinical performance.

## Enhanced Deliverability

The GuideLiner® Coast® Catheter showed greater deliverability through the guide catheter and vasculature than the Guidezilla™ II Catheter and the Telescope™ Catheter.



Deliverability is proportional to the inverse of track force. Values calculated as 1,000 divided by track force. Required less force in a simulated model. Testing completed by Teleflex. Data on file with Teleflex. Bench test results may not necessarily be indicative of clinical performance.

## GuideLiner® Guide Extension Catheters

GuideLiner® Catheters are intended to be used in conjunction with guide catheters to access discrete regions of the coronary and/or peripheral vasculature, to facilitate placement of interventional devices, and to assist in crossing de novo coronary chronic total occlusions (CTO). GuideLiner® V3 Catheter is indicated for CTO in the US only, GuideLiner® Coast® Catheter is indicated for CTO in the US and Canada. GuideLiner® Catheters are contraindicated in vessels less than 2.5mm in diameter and in vessels in the neurovasculature or the venous system.

### GuideLiner® V3 Catheter Manufacturing Dimensions

PRODUCT NO.	SIZE	REQUIRED GUIDE CATHETER I.D.	PUSH ROD O.D.	GUIDE EXTENSION I.D.	TIP O.D.	RAPID EXCHANGE LENGTH	WORKING LENGTH
5569	5 Fr.	5 Fr. I.D. $\geq 0.056"$ (1.42 mm)	0.010" (0.25 mm)	0.046" (1.17 mm)	4.0 Fr. (1.35 mm / 0.053")	25 cm	150 cm
5570	5.5 Fr.	6 Fr. I.D. $\geq 0.066"$ (1.68 mm)	0.012" (0.30 mm)	0.051" (1.30 mm)	4.8 Fr. (1.60 mm / 0.063")	25 cm	150 cm
5571	6 Fr.	6 Fr. I.D. $\geq 0.070"$ (1.78 mm)	0.012" (0.30 mm)	0.056" (1.42 mm)	5.1 Fr. (1.70 mm / 0.067")	25 cm	150 cm
5572	7 Fr.	7 Fr. I.D. $\geq 0.078"$ (1.98 mm)	0.012" (0.30 mm)	0.062" (1.57 mm)	5.7 Fr. (1.90 mm / 0.075")	25 cm	150 cm
5573	8 Fr.	8 Fr. I.D. $\geq 0.088"$ (2.24 mm)	0.012" (0.30 mm)	0.071" (1.80 mm)	6.5 Fr. (2.16 mm / 0.085")	25 cm	150 cm

Packaged in quantities of 1 unit per box.

### GuideLiner® Coast® Catheter Manufacturing Dimensions

PRODUCT NO.	SIZE	MINIMUM COMPATIBLE GUIDE CATHETER I.D.	PUSH ROD O.D. (FLAT RIBBON)	GUIDE CATHETER I.D. MINUS PUSH ROD DIAMETER	GUIDE EXTENSION I.B.	EFFECTIVE I.D.
5270	5.5 Fr.	0.066" (6 Fr.)	0.012" + 0.002" = 0.014"	0.066" - 0.014" = 0.052"	0.051"	0.051"
5271	6 Fr.	0.070" (6 Fr.)	0.012" + 0.002" = 0.014"	0.070" - 0.014" = 0.056"	0.056"	0.056"
5272	7 Fr.	0.078" (7 Fr.)	0.012" + 0.002" = 0.014"	0.078" - 0.014" = 0.064"	0.062"	0.062"
5273	8 Fr.	0.088" (8 Fr.)	0.012" + 0.002" = 0.014"	0.088" - 0.014" = 0.074"	0.071"	0.071"

Packaged in quantities of 1 unit per box.

Teleflex is a global provider of medical technologies designed to improve the health and quality of people's lives. We apply purpose driven innovation – a relentless pursuit of identifying unmet clinical needs – to benefit patients and healthcare providers. Our portfolio is diverse, with solutions in the fields of vascular access, interventional cardiology and radiology, anesthesia, emergency medicine, surgical, urology and respiratory care. Teleflex employees worldwide are united in the understanding that what we do every day makes a difference. For more information, please visit [teleflex.com](http://teleflex.com).

Teleflex is the home of Arrow®, Deknatel®, LMA®, Pilling®, QuikClot®, Rusch®, UroLift®, and Weck® – trusted brands united by a common sense of purpose.

### Corporate Office

Phone +1 610 225 6800, 550 E. Swedesford Road, Suite 400, Wayne, PA 19087, USA

### Regional Offices

**United States:** Phone +1 919 544 8000, Toll Free 866 246 6990, [cs@teleflex.com](mailto:cs@teleflex.com), 3015 Carrington Mill Boulevard, Morrisville, NC 27560, USA

**Latin America:** Phone +1 919 433 4999, [la.cs@teleflex.com](mailto:la.cs@teleflex.com), 3015 Carrington Mill Boulevard, Morrisville, NC 27560, USA

**International:** Phone +353 (0)9 06 46 08 00, [orders.intl@teleflex.com](mailto:orders.intl@teleflex.com), Teleflex Medical Europe Ltd., IDA Business and Technology Park, Dublin Road, Athlone, Co Westmeath, Ireland

**Australia** 1300 360 226

**Austria** +43 (0)1 402 47 72

**Belgium** +32 (0)2 333 24 60

**Canada** +1 (0)800 387 9699

**China (Shanghai)** +86 (0)21 6163 0965

**China (Beijing)** +86 (0)10 6418 5699

**Czech Republic** +420 (0)495 759 111

**France** +33 (0)5 62 18 79 40

**Germany** +49 (0)7151 406 0

**Greece** +30 210 67 77 717

**India** +91 (0)44 2836 5040

**Italy** +39 0362 58911

**Japan** +81 (0)3 6632 3600

**Korea** +82 2 536 7550

**Mexico** +52 55 5002 3500

**Netherlands** +31 (0)88 00 215 00

**New Zealand** 0800 601 100

**Poland** +48 22 4624032

**Portugal** +351 22 541 90 85

**Singapore** (SEA non-direct sales countries) +65 6439 3000

**Slovak Republic** +421 (0)3377 254 28

**South Africa** +27 (0)11 807 4887

**Spain** +34 918 300 451

**Switzerland** +41 (0)31 818 40 90

**United Kingdom** +44 (0)1494 53 27 61

For more information, please visit [teleflex.com](http://teleflex.com).

**CAUTION:** Federal (USA) law restricts these devices to sale or use by or on the order of a physician.

Teleflex, the Teleflex logo, Arrow, Coast, Deknatel, GuideLiner, LMA, Pilling, QuikClot, Rusch, UroLift, and Weck are trademarks or registered trademarks of Teleflex Incorporated or its affiliates in the U.S. and/or other countries. Refer to the Instructions for Use for a complete listing of the indications, contraindications, warnings, and precautions. Information in this document is not a substitute for the product Instructions for Use. Not all products may be available in all countries. Please contact your local representative.

© 2023 Teleflex Incorporated. All rights reserved. MC-003856 Rev 0.2 06/2023.