

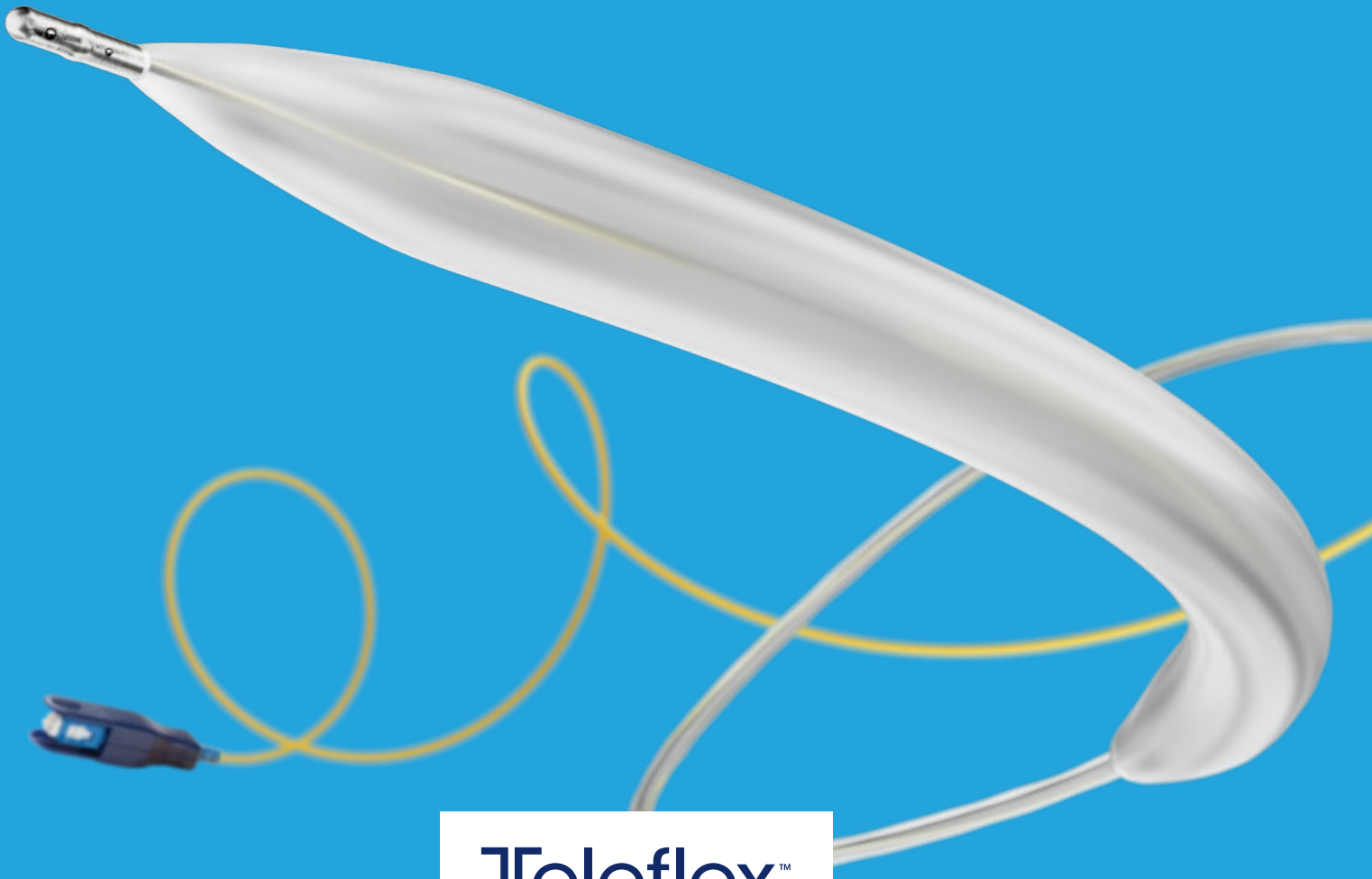
ARROW™



Intra-Aortic Balloon Catheters



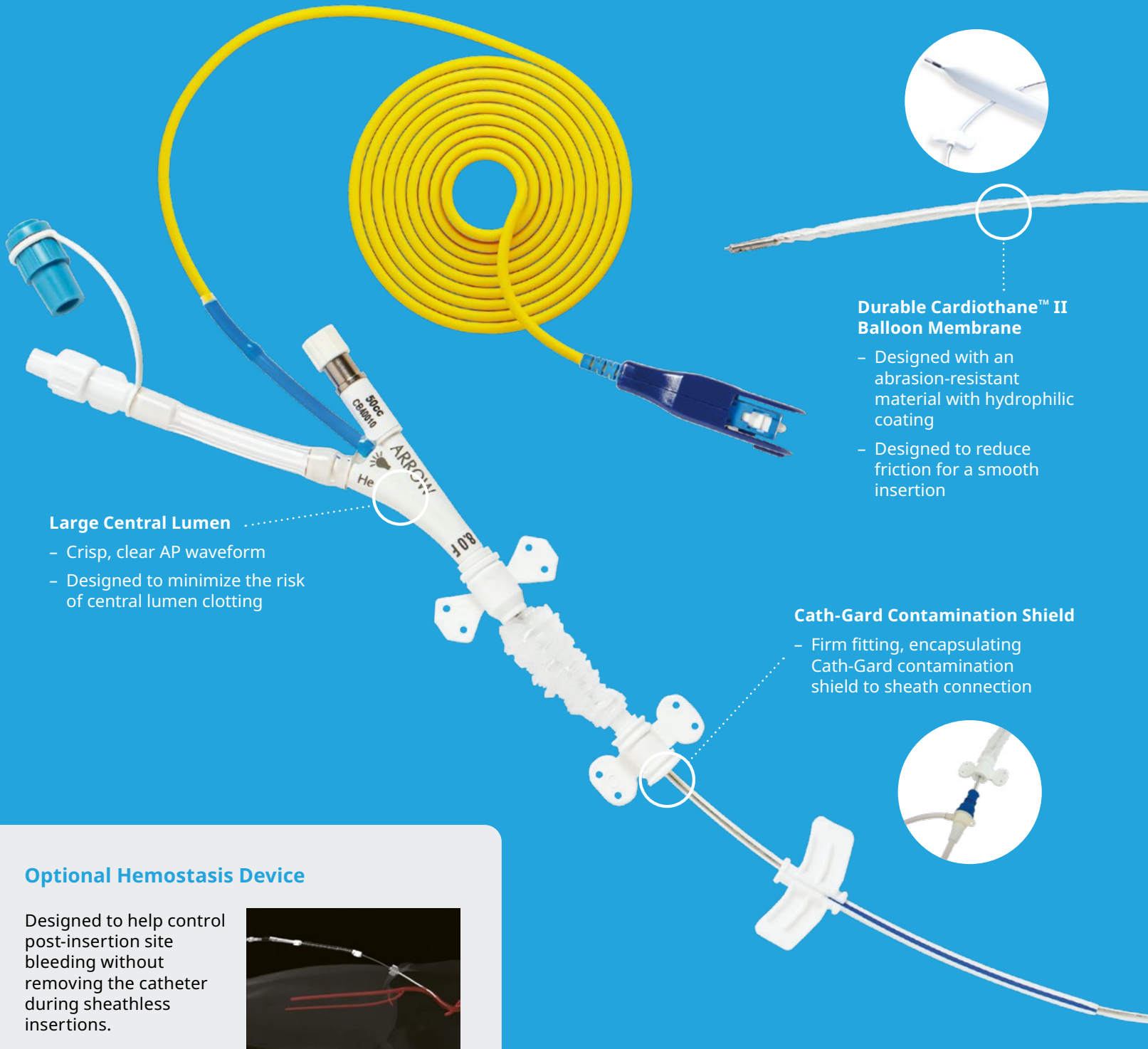
Proactively meeting your counterpulsation needs



Teleflex™
Empowering the future of healthcare

Built-in performance features on all Arrow™ IAB Catheters

As a leader in intra-aortic balloon (IAB) therapy, our goal is to provide products and services that meet your every counterpulsation need. Nowhere is that more clear than in our extensive and varied offering of IAB catheters.



Durable Cardiothane™ II Balloon Membrane

- Designed with an abrasion-resistant material with hydrophilic coating
- Designed to reduce friction for a smooth insertion

Large Central Lumen

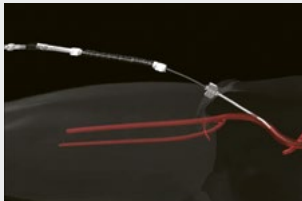
- Crisp, clear AP waveform
- Designed to minimize the risk of central lumen clotting

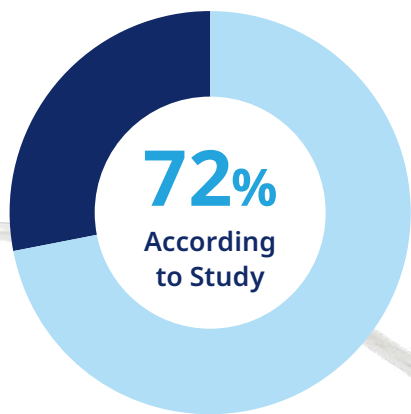
Cath-Gard Contamination Shield

- Firm fitting, encapsulating Cath-Gard contamination shield to sheath connection

Optional Hemostasis Device

Designed to help control post-insertion site bleeding without removing the catheter during sheathless insertions.





Hydrophilic-Coated Balloon

- Clinical study showed a 72% reduction in ischemic vascular events associated with use of the hydrophilic-coated RediGuard™ IAB Catheter, compared to an uncoated IAB catheter¹

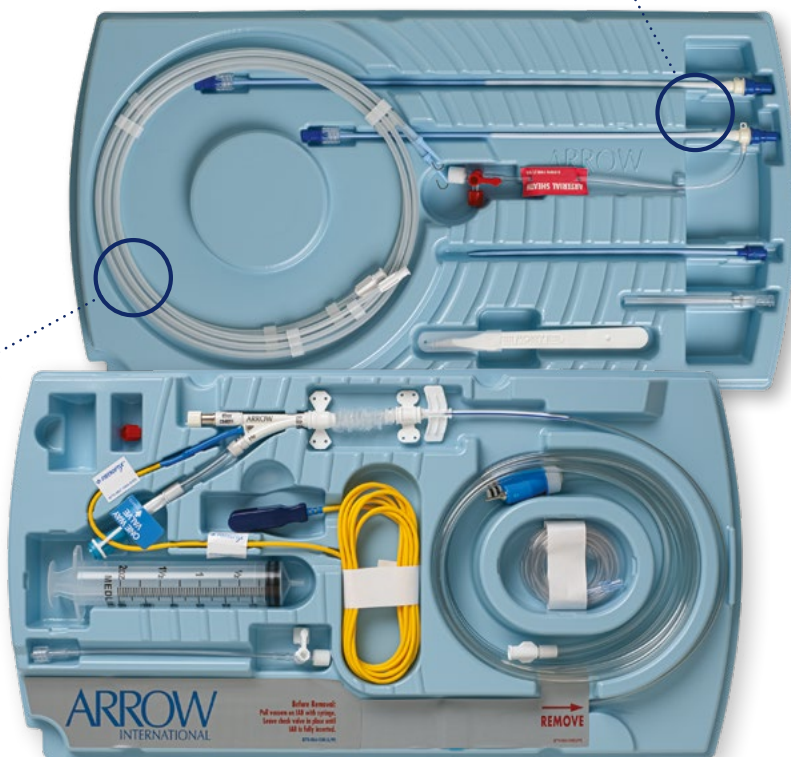
Two 0.025", 175 cm, Extra-Stiff PTFE-Coated "J" Guidewires

- Spare specialized guidewire available for your convenience

Our IAB Catheters come with a catheter tray and an insertion kit equipped with everything you need in one convenient location.

Two Sheath Options

- Each insertion kit includes a standard sheath and a sheath with a sidearm
- 360 degree locking dilator with dual-taper design enhances insertion



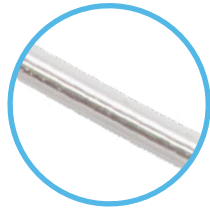
Tubing for Connection to Other Model Pump Consoles

- Additional, separate sterile package of driveline gas tubing for connection to other model pump consoles



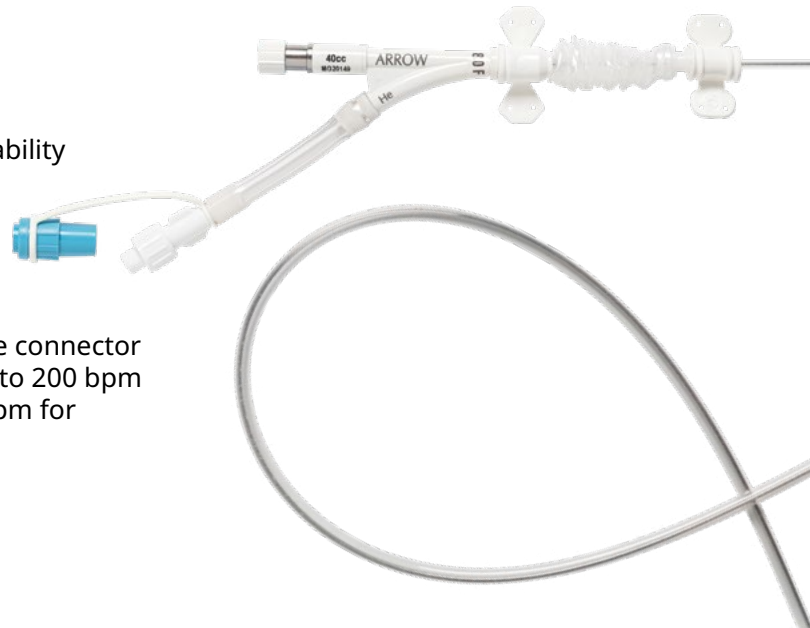
Take Confidence in Our Catheters

Whether you are looking to enable our proprietary IntraBeat™ Timing with the FiberOptix™ IAB Catheter or seeking the only high capacity 50 cc coil-reinforced UltraFlex™ IAB Catheter currently available, you can be confident that you are getting excellent quality and reliability across our wide range of IAB catheter options.

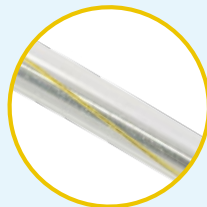


Ultra 8™ IAB Catheters

- Soft, atraumatic blue bumper tip
- Designed for kink resistance and pushability
- Central lumen design may reduce potential for catheter whip
- Composite designed thin wall alloy central lumen with 1.5" flex tip design
- Polycarbonate bifurcate with large bore connector ensures high rate helium exchange up to 200 bpm for 30cc and 40cc catheters, and 180 bpm for 50cc catheters



Our fiber optic catheter offering leverages the same great design features of the Ultra 8™ Catheter, along with added enhancements.



FiberOptix™ IAB Catheters

- Simple-Connect™ Fiber Optic Sensor (FOS) Single Source Connection Point for improved zeroing consistency and FOS pressure accuracy
- Dual high fidelity Arterial Pressure (AP) sensing enables proprietary IntraBeat™ Timing when connected to the Teleflex Intra-Aortic Balloon Pump (IABP)



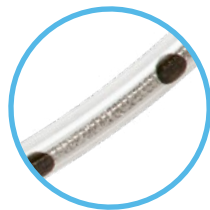
UltraFlex™ IAB Catheters

- The only coil reinforced 30, 40, and 50 cc IAB Catheters currently available
- Composite designed thin wall alloy central lumen with 1.5" flex tip design
- Coil reinforced catheter may reduce potential for catheter whip
- Polycarbonate bifurcate with large bore connector enables high-rate helium exchange - up to 200 bpm for 30cc and 40cc catheters, and 180 bpm for 50cc catheters

The UltraFlex™ Catheter is designed to navigate tortuous anatomy and resist kinking for optimal gas exchange.

RediGuard™ IAB Catheters

- Flexible, soft catheter with composite designed stainless-steel braid central lumen
- Smallest Arrow™ IAB Catheter currently available - 7 Fr. 30 cc
- Centimeter markings on catheter body to facilitate placement



Optimal Balloon Sizing for Your Patient: Prioritizing Safety and Support

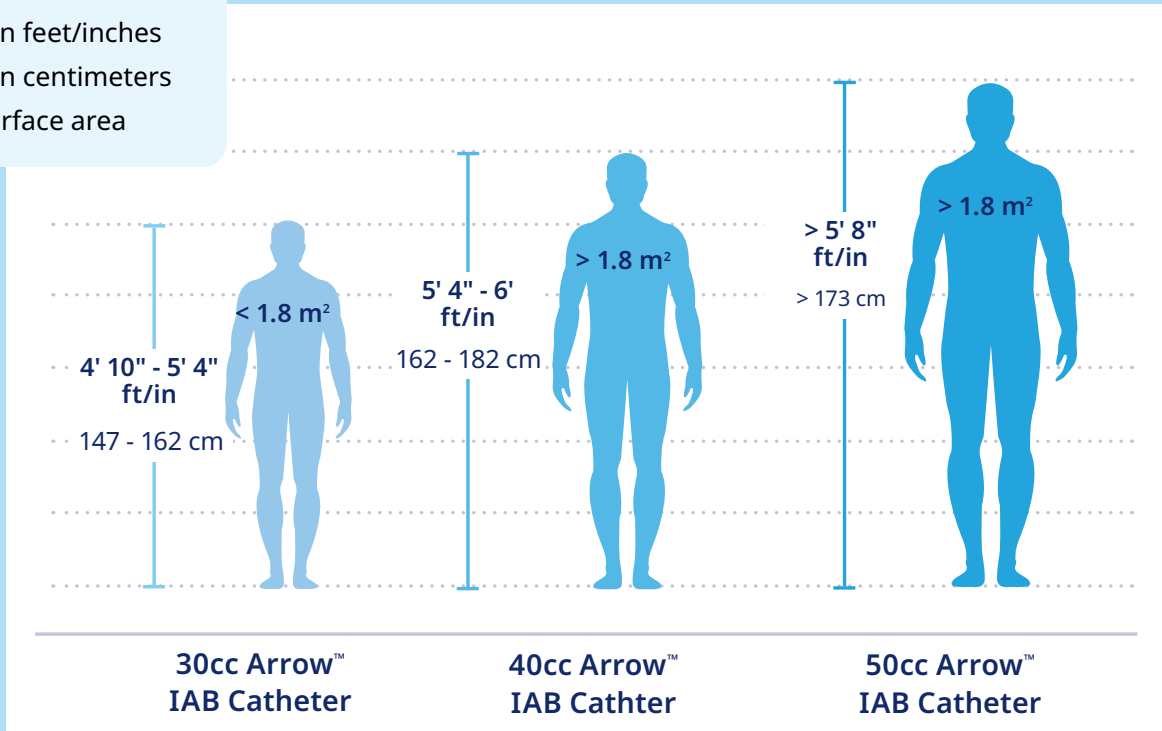
Teleflex sizing guidelines promote treatment for all patient anatomies



Arrow™ IAB Catheter Sizing Guidelines*

Sizing Guidelines

- Height in feet/inches
- Height in centimeters
- Body surface area



*Please refer to the IFU.

Contact



Teleflex Academy

Learn more about our Catheters at learn.teleflex-academy.com



IABP by Teleflex™

Learn more about our product offerings at IABP.com



Learn More

You can Request a Demo at IABP.com
Contact your local rep

Ordering Information

FiberOptix™ IAB Catheters

PRODUCT NUMBER	CATHETER SIZE	BALLOON VOLUME	INSERTABLE LENGTH	SHEATH LENGTH	CENTRAL LUMEN I.D.	MAXIMUM GUIDEWIRE	BPM RATE	CATHETER MATERIAL	BALLOON MEMBRANE LENGTH	INFLATED DIAMETER
IAB-05830-LWS-SC*	8 Fr.	30 cc	23.8" (60.5 cm)	6" (15 cm)	0.027"	0.025"	200	Polyurethane/ Pebax	9.1" (230 mm)	13.9 mm
IAB-05840-LWS-SC*	8 Fr.	40 cc	26" (66.0 cm)	6" (15 cm)	0.027"	0.025"	200	Polyurethane/ Pebax	10.2" (260 mm)	15.0 mm
IAB-05850-LWS-SC*	8 Fr.	50 cc	26" (66.0 cm)	6" (15 cm)	0.027"	0.025"	180	Polyurethane/ Pebax	10.3" (262 mm)	17.0 mm

Ultra 8™ IAB Catheters

PRODUCT NUMBER	CATHETER SIZE	BALLOON VOLUME	INSERTABLE LENGTH	SHEATH LENGTH	CENTRAL LUMEN I.D.	MAXIMUM GUIDEWIRE	BPM RATE	CATHETER MATERIAL	BALLOON MEMBRANE LENGTH	INFLATED DIAMETER
IAB-05830-U	8 Fr.	30 cc	23.8" (60.5 cm)	6" (15 cm)	0.027"	0.025"	200	Polyurethane/ Pebax	9.1" (230 mm)	13.9 mm
IAB-05840-U	8 Fr.	40 cc	26" (66.0 cm)	6" (15 cm)	0.027"	0.025"	200	Polyurethane/ Pebax	10.2" (260 mm)	15.0 mm

UltraFlex™ IAB Catheters

PRODUCT NUMBER	CATHETER SIZE	BALLOON VOLUME	INSERTABLE LENGTH	SHEATH LENGTH	CENTRAL LUMEN I.D.	MAXIMUM GUIDEWIRE	BPM RATE	CATHETER MATERIAL	BALLOON MEMBRANE LENGTH	INFLATED DIAMETER
IAB-06830-U	7.5 Fr.	30 cc	23.8" (60.5 cm)	6" (15 cm)	0.027"	0.025"	200	Polyurethane Stainless Steel	9.1" (230 mm)	13.9 mm
IAB-06840-U	7.5 Fr.	40 cc	26.0" (66.0 cm)	6" (15 cm)	0.027"	0.025"	200	Polyurethane Stainless Steel	10.2" (260 mm)	15.0 mm
IAB-06850-U	8 Fr.	50 cc	26.0" (66.0 cm)	6" (15 cm)	0.027"	0.025"	180	Polyurethane Stainless Steel	10.3" (262 mm)	17.0 mm

RediGuard™ IAB Catheters

PRODUCT NUMBER	CATHETER SIZE	BALLOON VOLUME	INSERTABLE LENGTH	SHEATH LENGTH	CENTRAL LUMEN I.D.	MAXIMUM GUIDEWIRE	BPM RATE	CATHETER MATERIAL	BALLOON MEMBRANE LENGTH	INFLATED DIAMETER
IAB-S730C	7 Fr.	30 cc	26.8" (60.5 cm)	6" (15 cm)	0.027"	0.025"	200	Polyurethane	9.1" (230 mm)	13.9 mm
IAB-S840C	8 Fr.	40 cc	26.0" (66.0 cm)	6" (15 cm)	0.027"	0.025"	200	Polyurethane	10.2" (260 mm)	15.0 mm
IAB-S850C	8 Fr.	50 cc	26.0" (66.0 cm)	6" (15 cm)	0.027"	0.025"	180	Polyurethane	10.3" (262 mm)	17.0 mm

Replacement Insertion Kits

PRODUCT NO.	DESCRIPTION
IAK-06845	Replacement insertion kit for use with 30 and 40 cc UltraFlex™, Ultra 8™, and FiberOptix™ IAB Catheters
IAK-07848	Replacement insertion kit for use with 50 cc RediGuard™, UltraFlex™, Ultra 8™, and FiberOptix™ IAB Catheters
IAK-S71T	Replacement insertion kit for use with RediGuard™ 30 cc IAB Catheters
IAK-S81T	Replacement insertion kit for use with RediGuard™ 40 cc IAB Catheters

Adaptors and Driveline Tubing

PRODUCT NO.	DESCRIPTION
IAK-02691	Driveline tubing with pre-attached Arrow™ 30 cc Pump Connector for use with Teleflex™ Pump Consoles, and all Arrow™ 30 cc IAB Catheters
IAK-02692	Driveline tubing with pre-attached Arrow™ 40 cc Pump Connector for use with Teleflex™ Pump Consoles, and all Arrow™ 40 cc IAB Catheters
IAK-02693	Driveline tubing with pre-attached Arrow™ 50 cc Pump to Connector for use with Teleflex™ Pump Consoles and all Arrow™ 50 cc IAB Catheters
IAK-02263	Driveline tubing for use with Datascope™/Getinge™ Balloon Pumps and Arrow™ 30 cc and 40 cc IAB Catheters
IAK-02271	Driveline tubing for use with Datascope™/Getinge™ Balloon Pumps and Arrow™ 50 cc IAB Catheters

Additional Accessories

PRODUCT NO.	DESCRIPTION
IB0200	StatLock™ Stabilization Device

Note: All Arrow™ Catheters are not made with natural rubber latex.

*Only available in the U.S.



Visit iabp.com
to learn more.

References:

1. Winters KJ, Smith SC, Cohen M, et al. Reduction in ischemic vascular complications with hydrophilic-coated intra-aortic balloon catheter. *Catherization and Cardiovascular Interventions*. 1999;46(3):357-362.

Corporate Office

Phone +1 610 225 6800, 550 E. Swedesford Road, Suite 400, Wayne, PA 19087, USA

Regional Offices

United States: Phone +1 919 544 8000, Toll Free 866 246 6990, cs@teleflex.com, 3015 Carrington Mill Boulevard, Morrisville, NC 27560, USA

Latin America: Phone +1 919 433 4999, la.cs@teleflex.com, 3015 Carrington Mill Boulevard, Morrisville, NC 27560, USA

International: Phone +353 (0)9 06 46 08 00, orders.intl@teleflex.com, Teleflex Medical Europe Ltd., IDA Business and Technology Park, Dublin Road, Athlone, Co Westmeath, Ireland

CAUTION: Federal (USA) law restricts these devices to sale or use by or on the order of a physician.

Teleflex, the Teleflex logo, AC3 Optimus, Arrow, FiberOptix, IntraBeat, RediGuard, Simple-Connect, StatLock, Ultra 8, and UltraFlex are trademarks or registered trademarks of Teleflex Incorporated or its affiliates in the U.S. and/or other countries. All other trademarks and registered trademarks are property of their respective owners. Refer to the Instructions for Use for a complete listing of the indications, contraindications, warnings and precautions. Information in this material is not a substitute for the product Instructions for Use. Not all products may be available in all countries. Please contact your local representative.

For more information, please visit teleflex.com

© 2025 Teleflex Incorporated. All rights reserved. MC-000164 Rev 5. Revised 03/2025.

Teleflex[™]
Empowering the future of healthcare