

Go with the flow

Ringer™ Perfusion Balloon Catheter

The **Ringer™ Perfusion Balloon Catheter (PBC)** is a rapid exchange catheter that includes a helical shaped semi-compliant balloon with a central perfusion lumen to allow distal blood flow and delivery of secondary devices.

The inflated coil balloon approximates a hollow cylinder.

The catheter shaft has positioning marks located at 95cm (single mark) and 105cm (double mark) from the distal tip.

Radiopaque markers at the proximal and distal balloon margins allow visualization and accurate positioning of the balloon catheter in the target segment.



The Ringer™ PBC can enable balloon inflation of up to **60 minutes**.¹

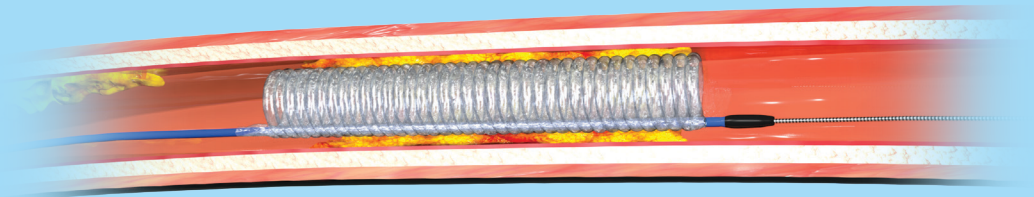
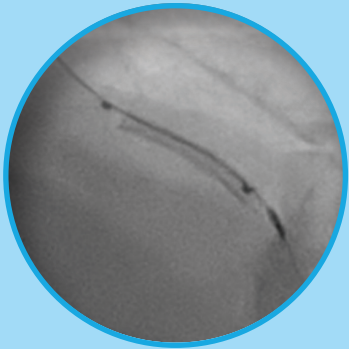
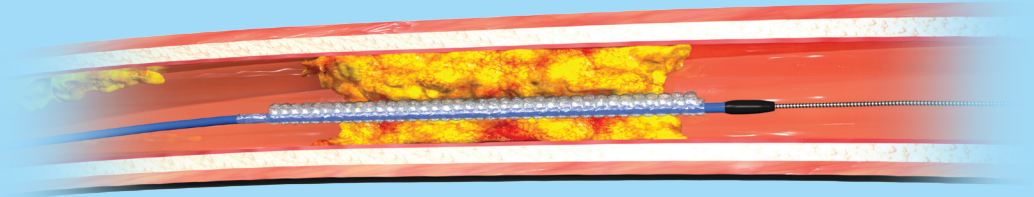
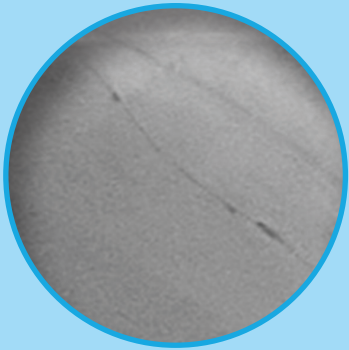
MODEL	DESCRIPTION	WORKING LENGTH	BALLOON OUTER DIAMETER	BALLOON LENGTH	CROSSING PROFILE	BALLOON INNER DIAMETER	NOMINAL PRESSURE	RATED BURST PRESSURE	MINIMUM GUIDE CATHETER COMPATIBILITY
5882	Ringer 2.5 mm x 20 mm	143 cm	2.5 mm	20 mm	0.052"	0.039" 1.0 mm	6atm	8atm	6F
5884	Ringer 3.0 mm x 20 mm	143 cm	3.0 mm	20 mm	0.054"	0.059" 1.5 mm	6atm	8atm	6F
5886	Ringer 3.5 mm x 20 mm	143 cm	3.5 mm	20 mm	0.056"	0.079" 2.0 mm	6atm	8atm	6F
5888	Ringer 4.0 mm x 20 mm	143 cm	4.0 mm	20 mm	0.058"	0.099" 2.5 mm	6atm	8atm	6F
5890	Ringer 4.5 mm x 20 mm	143 cm	4.5 mm	20 mm	0.060"	0.119" 3.0 mm	6atm	8atm	6F

The Ringer™ Perfusion Balloon Catheter is indicated for balloon dilatation of coronary artery or coronary bypass graft stenoses where the physician desires distal blood perfusion during balloon inflation for the purpose of improving myocardial perfusion.

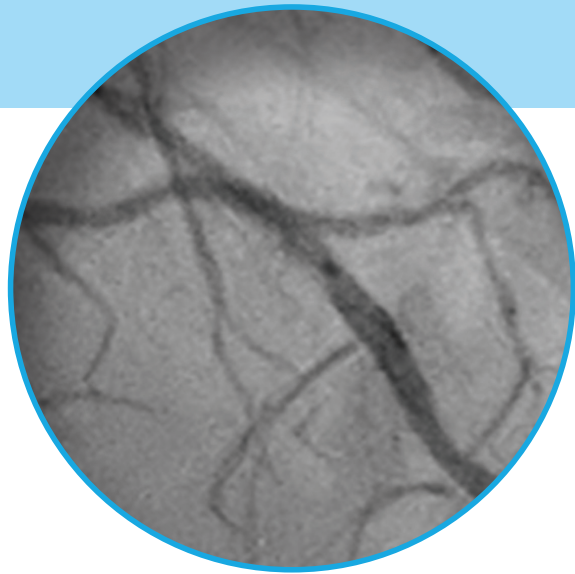
1. Data on file at Teleflex. Benchtop and animal test data may not be indicative of clinical performance.

Support the Heart. Support the Patient.

The Ringer™ PBC is designed to keep the vessel lumen open, providing continuous blood flow to the distal anatomy during inflation.



In a clinical study (n=59¹),
95% of subjects had TIMI-3 flow
during Ringer™ PBC inflation.²



2. Data of File at Teleflex. Ringer Perfusion Balloon Catheter Percutaneous Intervention (PTCA) Clinical Study. One subject was missing TIMI value from both site and core lab during inflation.

CAUTION: Federal (USA) law restricts this device to sale or use by or on the order of a physician.

Teleflex, the Teleflex logo, and Ringer are trademarks or registered trademarks of Teleflex Incorporated or its affiliates in the U.S. and/or other countries. Refer to the Instructions for Use for a complete listing of the indications, contraindications, warnings and precautions. Information in this material is not a substitute for the product Instructions for Use. Not all products may be available in all countries. Please contact your local representative.

© 2024 Teleflex Incorporated. All rights reserved. MC-009640 Rev 0.1. Revised 08/2024.

Teleflex™
Empowering the future of healthcare